



# International Student Prospectus & Course Guide

November 2022

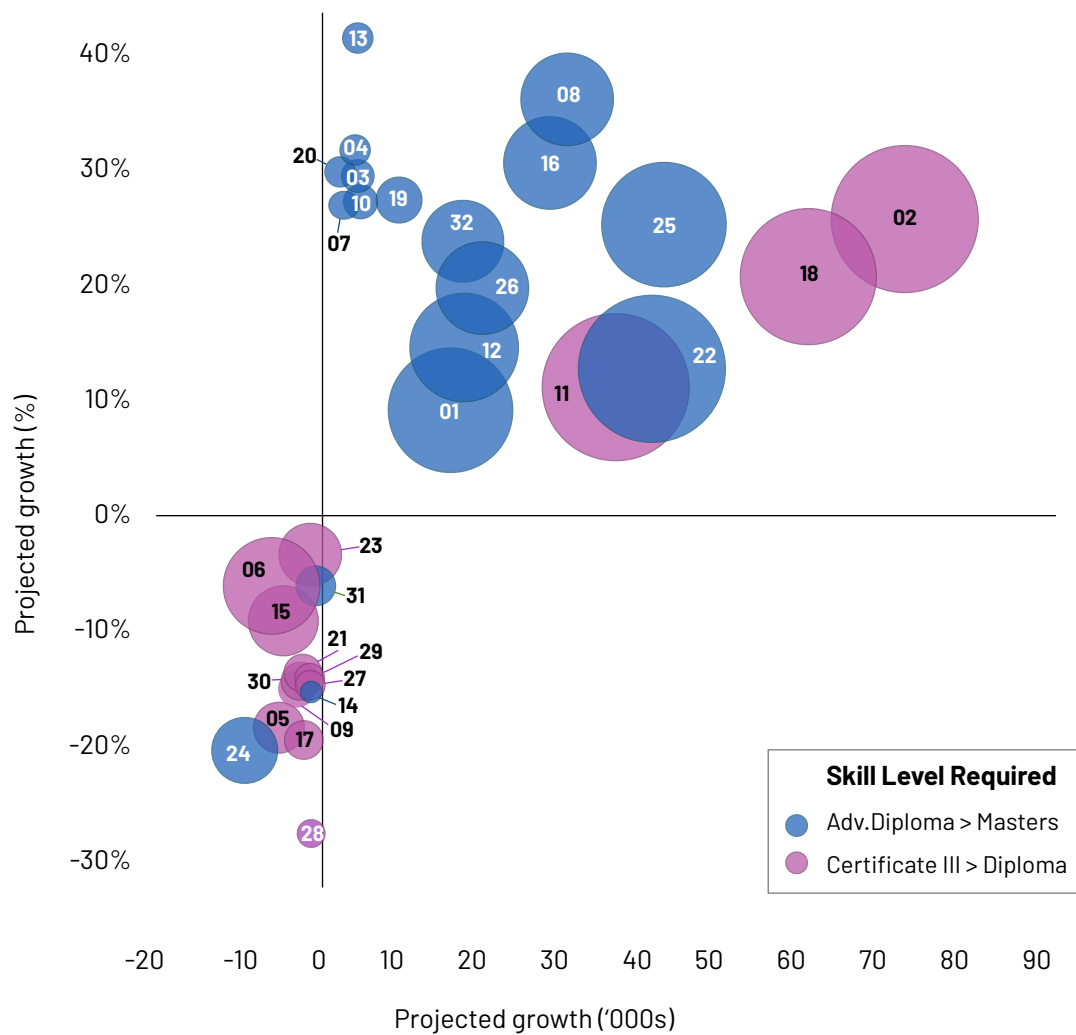




#StudyAtCapital

# Live the Capital Life

## Australia's projected occupation employment changes by 2026



01 Accountants & Auditors	12 Human Resource Managers	23 Retail Management
02 Aged & Disability Carers	13 ICT Support Engineers	24 Secretaries & PAs
03 Transport & Logistics	14 Education	25 Software & App Programmers
04 Speech & Audio Therapy	15 Keyboard Operators	26 Legal Services
05 Bank & Financial Workers	16 Managers & Analysts	27 Vendors & Salespeople
06 Bookkeepers	17 Machine Operators	28 Telemarketers
07 Health & Mental Therapy	18 Hospitality & Food Services	29 Carpenters & Timber Workers
08 Database & ICT Specialists	19 Physiotherapists	30 Tourism & Travel Advisors
09 Engineers, Plumbing, Electrical	20 Podiatrists	31 Wall & Floor Tilers
10 Industrial Design	21 Printers	32 Welfare Support Workers
11 Clerical & Administration	22 Medical & Nursing	

Modified from: "Projecting Employment to 2026",  
National Skills Commission, March 2022





# WHY CANBERRA?

## LOCATION



Australia's capital city.  
Elevation 1,869 feet above sea level.  
2 hrs to snow resorts or beaches.  
Traditional 'four seasons' experience.  
Winter -1°C. Summer 27°C. Av. 19.7°C.  
International airport. Direct flights.

## PEOPLE



Youthful: 50% under 35 years.  
Multicultural: 32% born overseas.  
Educated: 37% with Bachelors degree.

## JOBS



242,300 jobs by 2026 (6% growth).  
↑35% café & restaurant managers.  
↑34% ICT engineers & systems analysts.  
↑23% hotel and hospitality managers.  
↑18% management & administration.  
↑13% health, aged, disability care.  
↑9% construction & building jobs.  
↑8% childcare & other education.  
Lowest unemployment in Australia.  
Student jobs in sectors that support  
Government and commerce.

## HOUSING



Avg weekly living costs: \$300 rent.  
\$100 food. \$25 travel; \$125 other.  
14% less expensive than SYD or MEL.  
City, mountain or lakeside apartments.

## LIFESTYLE

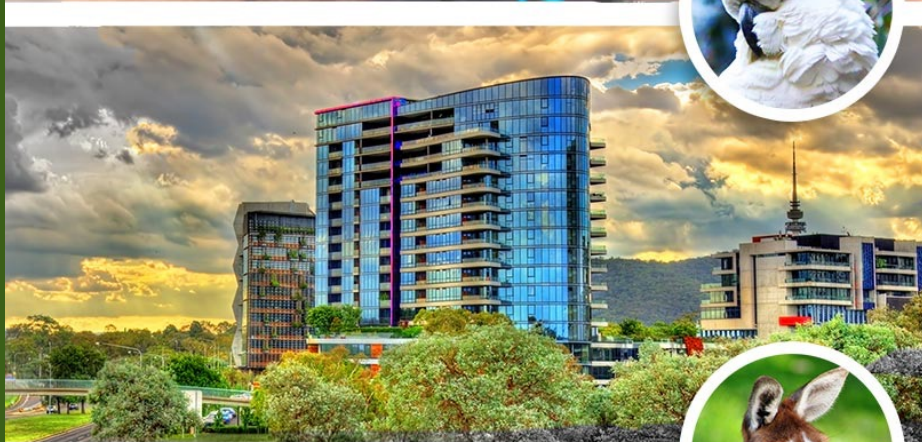


427,000 population.  
Voted #1 Best Place to Live in Australia.  
One of the safest cities in the world.  
At the base of the Alpine National Park.  
Climb, hike, sail, fish, ski, snowboard.  
Mountains, lakes, culture and wildlife.

## STUDENT-FRIENDLY



Student population growth 17%/year.  
Home to Australia's #1 university (ANU).  
No traffic jams. Fast commute times.  
Trendy cafés, concerts and festivals.  
Free outdoor high speed wi-fi in the city.  
248 km to Sydney's famous attractions.





# WHY CAPITAL COLLEGE?

The previous chart showing data from the National Skills Commission. It highlights which jobs are expected to grow or shrink by 2026 in Australia.

With national unemployment the lowest it's been since 1974, there simply won't be enough people to fill demand for all these new roles.

This means more people need to be trained. Capital College focuses on training for these high-growth areas.

For onshore and offshore international students, this is a golden opportunity.

Our **business, leadership and management** teaching team prepare you to start, operate and grow a commercial enterprise, whether it's your own entrepreneurial start-up or as a team leader, supervisor or manager.

Our **information technology** staff prepares you for roles in telecommunications network engineering and general ICT. Our students may apply to receive a skills assessment from Engineers Australia (EA), and will enjoy free membership in the prestigious Australian Computer Society (ACS) for industry accreditation and exclusive online tutorials.

Our **commercial cookery and hospitality** team is led by trainers with experience at some of the world's leading hospitality brands. In our state-of-the-art training kitchens they will teach you how to cook and run venues where people come to eat, sleep, meet or play. Practical work placements may be available.

Our **care and community services** trainers share hands-on expertise for disability support, mental health and occupational therapy to prepare you for roles in one of the fastest-growing employment sectors. Our students may apply for a skills assessment by the Australian Care Workers Association (ACWA). Practical work placements are also available.

All our campuses offer a **student support team** a number of whom who have been international students themselves. They understand the journey, and provide award-winning advice.

Each member of our **training and assessment team** has been hand-picked for their industry relevance, and how

they bring courses to life in a blended classroom and online environment. Their mentoring and coaching will help you 'learn how to learn', follow a study plan, and achieve excellence.

Research published by the International Education Association of Australia (IEAA) reveals that when students make the most of their time studying in Australia, they also learn to:

- interact with people better (95%)
- adapt faster to change (90%)
- improve their teamwork (88%)
- make smarter decisions (83%)
- be more entrepreneurial (54%)

This is important because traditional concepts of where you work, the tasks you complete, and even how you get paid are all changing in the face of technological, social and economic reform —what some call the Fourth Industrial Revolution.

In addition to competency in the courses you choose to study, you'll need to build these other important life skills.

As the Chinese philosopher Laozi said, "The journey of a thousand miles begins with the first step".

**Come take that step with Capital College.**



## COURSE LEVELS

Completing a VET course offers an excellent pathway to a career or further study and develops practical workplace focused skills that can complement previous studies.



## UNIQUE STUDENT IDENTIFIER (USI)

All students enrolled in nationally-recognised vocational education and training need a Unique Student Identifier (USI). This is an Australian Government requirement. The USI builds a secure and accurate record of all the qualifications you gain in Australia from any training organisation. If you don't already have a USI, our Admissions team will create one for you.

## RECOGNITION OF PRIOR LEARNING & CREDIT TRANSFER

You may have acquired knowledge and skills relevant to your study area through previous training, work or life experience. The Recognition of Prior Learning (RPL) evaluation process may allow an award of credits toward your course.

Using your USI, we will also recognise units and qualifications achieved at other Registered Training Organisations (RTOs) where they appear in our curriculum. This is called Credit Transfer. This process will exempt you from repeating units you have already completed. Talk to us to discuss your options: [info@capital.edu.au](mailto:info@capital.edu.au)



### Certificate III

Courses at this level provide job-ready skills & qualifications.



### Certificate IV

Regarded as a first-level qualification for a supervisory role across most industries.



### Diploma

A high-level qualification that deepens your skills, preparatory to studying an Advanced Diploma with Capital College or a Bachelors degree with one of our university partners.



### Advanced Diploma

This extra year to master your vocational skills is attractive to employers, and can earn up to one year of transfer credits to university, at a much lower cost.



### Graduate Diploma

A postgraduate qualification that sits above a Bachelors degree and below a Master's degree, providing specialised education in your field of study.



"The lecturers deliver in a professional manner and offer great support classes. I recommend Capital College to anyone who wants to gain a solid education on a reasonable budget."

Qiujin, China, Diploma of Leadership and Management



## AIRPORT PICK-UP

Capital College can arrange a pick-up service from Canberra International Airport for newly-arriving international students, for a small fee. Your education agent may also provide this service.

## ORIENTATION

It is essential that you attend your Orientation Day ("O-Day") before commencing your studies. Orientation provides information relevant to life in your new city and gives an introduction to Capital College, including:

- ▶ Meet & greet with our support staff and trainers
- ▶ Student USI set-up and online learning activation
- ▶ Overview of your student visa rules and regulations
- ▶ Tips for a successful and rewarding experience
- ▶ Information about student support services
- ▶ Campus and/or locality tours
- ▶ Fun activities to get to know your fellow students

## HEALTH & WELLBEING

Overseas Student Health Cover is a requirement for all international students on a study visa. We recommend Allianz Global Assistance, though you can choose any approved insurer. Learn more about Allianz at:

[allianzassistancehealth.com.au/en/student-visa-oshc](https://allianzassistancehealth.com.au/en/student-visa-oshc)







## ACCOMMODATION

### Canberra Accommodation Centre

In Canberra, living on-campus is convenient and affordable. You will have a private room with shared facilities (wifi, lounge, TV room, laundry, kitchen, courtyard and bbq) in a student tower right above our commercial cookery kitchens on Northbourne Avenue, just two tram stops from our main University Avenue campus. Ask our Admissions team for details.



### Private accommodation

There are also private accommodation providers near our Canberra campus. You might consider:

- > <https://www.homestaynetwork.org>
- > <https://flatmates.com.au>
- > Websites



## EMPLOYMENT

Capital College and our education agent partners can assist students with direction and advice on local employment opportunities. There are excellent employment opportunities in close to our Canberra campus.

## QUALITY ASSURED

As an Australian Government approved provider, Capital College meets strict standards including those set out by :

- > Australian Skills Quality Authority (ASQA)  
[www.asqa.gov.au](http://www.asqa.gov.au)
- > Australian Qualifications Framework (AQF)  
[www.aqf.edu.au](http://www.aqf.edu.au)
- > Education Services for Overseas Students (ESOS) Act  
[www.dese.gov.au/esos-framework](http://www.dese.gov.au/esos-framework)

# ENTRY REQUIREMENTS

During our application process you must meet minimum academic and English language entry requirements. Our team are here to answer all of your questions. Just email us on: [info@capital.edu.au](mailto:info@capital.edu.au)

## Academic entry requirements

Visit [www.capital.edu.au](http://www.capital.edu.au) for all academic entry requirements for the courses you want to study with us, whether you are already in Australia, or starting your study from your home country.

QUALIFICATION	ENTRY REQUIREMENT
Certificate III and Certificate IV	A qualification equivalent to Australian Year 10
Diploma and Advanced Diploma	A qualification equivalent to Australian Year 12
Graduate Diploma	A qualification equivalent to Australian Year 12 plus five years work experience in leadership; or a Diploma or Advanced Diploma and three years experience; or a Bachelor degree and two years experience.

## English entry requirements

If you have completed Australian studies in English and achieved the qualifications required, you may already meet our entry requirements. We also accept the following English tests and levels for entry into VET courses.

ENGLISH TEST	ENTRY REQUIREMENT
IELTS Academic Module	Minimum overall score of 5.5 with no band less than 5.0
Cambridge Advanced English (CAE)	Minimum overall score of 165
Pearson Test of English (PTE) Academic Module	Minimum overall score of 42 with no less than 36 in Reading, Writing, Listening and Speaking

# PATHWAYS TO HIGHER EDUCATION

Capital College graduates may be eligible for credit transfers to a range of Australian universities (including those listed below), either via **formal pathways arrangement** with Capital College or **general credit transfer policies** that reduce the time and cost of completing an AQL7 Bachelor or AQL9 Masters degree.

Talk to our team or your education agent for details, or follow the links below.

[Bond Credit Calculator](#)   [SCU Credit Calculator](#)   [UC Credit Calculator](#)   [USYD Credit Calculator](#)  
[UQ Credit Calculator](#)   [Torrens Credit Calculator](#)   [UMEL Credit Calculator](#)   [Griffith Credit Calculator](#)  
[ANU Credit Calculator](#)   [UNSW Credit Calculator](#)   [Monash Credit Calculator](#)





## HOW TO APPLY

Complete our **simple 6-step process** to apply as an international student with Capital College.

1

Select your qualification  
[www.capital.edu.au/our-courses](http://www.capital.edu.au/our-courses)

4

We assess your application and issue an Offer Letter

2

Check entry requirements and term dates  
[www.capital.edu.au/intake-dates](http://www.capital.edu.au/intake-dates)

5

Accept our Offer Letter and receive your Confirmation of Enrolment (CoE)

3

Apply online or through an official education agent  
[www.capital.edu.au/apply](http://www.capital.edu.au/apply)

6

Apply for your student visa. Arrive on-campus. Attend Orientation Day. Start your course.



### SIT30821 Certificate III in Commercial Cookery (AQF3)

**CRICOS Code:** 109850H

**Location:** Canberra

**Intake dates:** Weekly

For more detailed course information, including current pricing and packages visit [capital.edu.au](http://capital.edu.au)

Learn how to prepare poultry, seafood, and meat dishes by honing your abilities in fundamental cooking methods. You'll learn how to operate efficiently in a commercial kitchen while ensuring the quality and safety of the food you're cooking. Graduates at this level may have some responsibility over others or provide advice or support to a team.

#### Career opportunities

Cook for cafés, restaurants, pubs, clubs, hotels or in catering operations for resorts, aged care homes, food manufacturers and schools.

**Note:** Subject to availability due to high demand.

### SIT40521 Certificate IV in Kitchen Management (AQF4)

**CRICOS Code:** 109512D

**Location:** Canberra.

**Intake dates:** Weekly

For more detailed course information, including current pricing and packages visit [capital.edu.au](http://capital.edu.au)

This training will prepare you to work as a supervisor in the kitchen, managing diversity in the workplace, using sustainable practices, planning menus, coordinating operations and developing supervisory skills. Places of employment may include commercial kitchens at cafés, restaurants, pubs, clubs, hotels or large catering operations.

#### Career opportunities

Chef, chef de partie, kitchen team leader, shift supervisor or manager of a small business in the food and beverage industry.

**Note:** Subject to availability due to high demand.





## SIT50416 Diploma of Hospitality Management (AQF5)

**CRICOS Code:** 106019H

**Location:** Canberra

**Intake dates:** Weekly

For more detailed course information, including current pricing and packages visit [capital.edu.au](http://capital.edu.au)

People will always reward others to cook their meals, pour their drinks, clean their room and make their bed. Learning how to profitably deliver an exceptional guest experience is at the heart of this qualification. It provides a pathway to work in any hospitality industry sector as a departmental or small business manager.

### Career opportunities

- > Bar attendant, barista, waiter or sommelier
- > Motel, restaurant or hospitality manager
- > Chef Patissier or Sous Chef

## SIT60316 Advanced Diploma of Hospitality Management (AQF6)

**CRICOS Code:** 106021C

**Location:** Canberra

**Intake dates:** Weekly

For more detailed course information, including current pricing and packages visit [capital.edu.au](http://capital.edu.au)

This qualification provides a pathway to work in any hospitality industry sector and for a diversity of employers including restaurants, hotels, motels, catering operations, clubs, pubs, cafés, and coffee shops. It allows for multi-skilling and for specialisation in accommodation services, cookery, food and beverage and gaming.

### Career opportunities

- > Food and Beverage manager
- > Café owner or Restaurant manager
- > Hotel manager or Executive housekeeper



### CHC33015 Certificate III in Individual Support (AQF3)

**CRICOS Code:** 0100455

**Location:** Canberra

**Intake dates:** Weekly from 2023

For more detailed course information, including current pricing and packages visit [capital.edu.au](https://capital.edu.au)

This qualification reflects the role of workers in the community and/or residential setting who follow a plan to provide individualised support to people with challenges related to ageing, disability or other reasons. You will learn to exercise discretion and take responsibility for outputs. Graduates gain a range of technical and procedural knowledge and practices to provide person-centred support.

#### Career opportunities

- > In Home Respite worker
- > Residential Support worker
- > Disability Support worker

**Note:** Subject to availability due to high demand.

### CHC52015 Diploma of Community Services (AQF5)

**CRICOS Code:** 109286J

**Location:** Canberra

**Intake dates:** Weekly from 2024

For more detailed course information, including current pricing and packages visit [capital.edu.au](https://capital.edu.au)

This qualification reflects the roles of community services, case management and social housing workers involved in managing, co-ordinating and/or delivering person-centred services to individuals, groups and communities. Workers may also have responsibility for the supervision of other workers and volunteers and/or case management. Graduates of this course may apply for a skills assessment by the Australian Community Workers Association.

#### Career opportunities

- > Community worker
- > Community Care manager
- > Family Services coordinator





## ICT50220 Diploma of Information Technology [Telecommunications Network Engineering] (AQF5)

**CRICOS Code:** 105573A

**Location:** Canberra

**Intake dates:** Weekly

For more detailed course information,  
including current pricing and packages visit  
[capital.edu.au](http://capital.edu.au)

This specialisation in Telecommunications Network Engineering is for students who recognise the advantages of being a specialist in a world where every business relies on ICT for communication, strategy, security, and productivity. Capital College students enrolled in this qualification receive membership in the Australian Computer Society.

### Career opportunities

- > Telecommunications Engineer
- > ICT Systems Administrator
- > ICT Customer Support Officer



## ICT60220 Advanced Diploma of Information Technology [Telecommunications Network Engineering] (AQF6)

**CRICOS Code:** 105944A

**Location:** Canberra

**Intake dates:** Weekly

For more detailed course information,  
including current pricing and packages visit  
[capital.edu.au](http://capital.edu.au)

This qualification provides advanced skills and knowledge to perform as a Telecommunications Network Engineer. Learn to carry out complex tasks whether working independently, leading a team or setting the ICT strategy for a business. Graduates of this course may apply for a Level 1 skills assessment by Engineers Australia.

### Career opportunities

- > Telecommunications Engineer
- > Senior Technical Officer \ (Telecommunications)
- > IP Convergence Integrator



## BUSINESS, LEADERSHIP & MANAGEMENT



### BSB50420 Diploma of Leadership and Management (AQF5)

**CRICOS Code:** 104300A

**Location:** Canberra

**Intake dates:** Weekly

For more detailed course information, including current pricing and packages visit [capital.edu.au](http://capital.edu.au)

Develop top-tier leadership and management skills by exploring the attributes that separate the best from the rest. Assignments, business simulations, presentations, and action-centered activities will equip you with the theory to learn 'what' and 'why', with hands-on experience to know 'how'.

**Career opportunities**

- > Business Unit Manager or Team Leader
- > Human Resources, Office or Administrative Manager
- > Sales and Marketing Manager

### BSB60420 Advanced Diploma of Leadership and Management (AQF6)

**CRICOS Code:** 105658G

**Location:** Canberra

**Intake dates:** Weekly

For more detailed course information, including current pricing and packages visit [capital.edu.au](http://capital.edu.au)

Students in this Advanced Diploma deepen their credentials in modern leadership practices after previously earning a Diploma or Advanced Diploma in this training package. You will apply the latest management theory to real-world situations and enhance your analytical thinking, organisational ability, decision-making, and people management skills.

**Career opportunities**

- > Operations Manager
- > Business Analyst
- > Business Development Director

### BSB80320 Graduate Diploma of Strategic Leadership (AQF8)

**CRICOS Code:** 105945M

**Location:** Canberra

**Intake dates:** Weekly

For more detailed course information, including current pricing and packages visit [capital.edu.au](http://capital.edu.au)

This program teaches analytical skills and leadership traits to forecast industry trends, lead people through change, and implement a successful strategy across multiple lines of business. Entry is limited to those with:

- 1) 2 years leadership / management experience + relevant Bachelor degree; or
- 2) 3 years leadership / management experience, + relevant Diploma or Advanced Diploma; or
- 3) 5 years full-time workplace experience at a significant level of responsibility and/or complexity in an enterprise.

**Career opportunities**

- > Small Business Manager, Owner-Operator
- > General Manager
- > Mid-level and Senior Leadership Roles



# ALUMNI TESTIMONIALS

What international students from around the world say about their Capital College experience.



Awesome teaching patterns here! Love the offering of support classes, and very helpful teachers and staff in Capital College!

Gabriela | Brazil



Capital College offers ideal subjects with a flexible schedule that includes weekend classes and professional teachers. If you decide to study in Australia, consider Capital College as your institution.

Roman | Ukraine



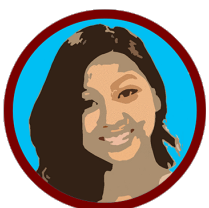
The faculty at Capital College have deep knowledge, and teach using current market examples. Based in student-friendly cities, it's safe, with many job opportunities.

Vanayak | India



Capital College is a wonderful place to study. It has a great learning environment and teaching facilities. Moreover, teachers and students all gave me valuable skills and knowledge from my studies here.

Mahmud | Nepal



I am very happy with the support classes and the online webinars. Excellent support from trainers for assessments, and modern facilities in a very neat and clean campus.

Sajini | Philippines



## CONTACT US

If you're considering studying at Capital College in our nation's capital city of Canberra get in touch online, meet us on campus, or talk to one of our authorised education agents.

Submit applications online at:

**capital.edu.au/apply**

Email **info@capital.edu.au**

For further information on courses, fees and entry requirements, talk to our Admissions team:



**Phone +61 2 6147 0999**



### Campus

Level 2, 17-21 University Avenue  
Canberra ACT 2601

**capital.edu.au**

**info@capital.edu.au**

f @ t in

#StudyAtCapital

CRICOS Provider Code 03537J - RTO Code 41593 - Australian Business Number 16 606 797 611

### Intellectual property

Capital College owns the copyright in this publication, no part may be reproduced without written permission. Capital College is a Registered Trade Mark.

### Disclaimer

Capital College

endeavours to ensure the information contained in this document is current and correct at the time of



Courses Recognised  
under



Award Winner

**Australian  
Export Awards**

Award Winner



Award Winner

**ACT TRAINING  
AWARDS 2021**